

MACHINE VISION SMART CAMERA



Performance and Application of Smart Camera

Product Background

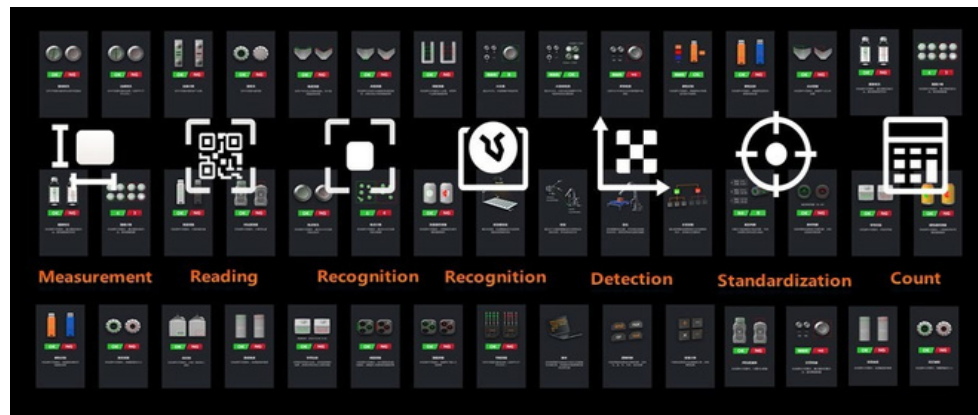
Industrial vision is widely used in food & beverage, cosmetics, pharmaceutical, building materials and chemicals, metal processing, electronics manufacturing, packaging, automotive manufacturing and other industries, and is still dominated by PC solutions. However, embedded (smart camera, X86 open platform) solutions for automated factories, the solution is simple to operate and easy to maintain equipment, and is increasingly becoming the mainstream choice. Smart camera is a highly integrated micro and small machine vision system that integrates image acquisition, storage, processing and communication functions into one, thus forming a multi-functional, modular, highly reliable and easy-to-operate machine vision solution. At the same time, due to the continuous iterative update of DSP, FPGA and a large number of storage technologies, its intelligence has been increasing to meet the needs of increasingly complex machine vision applications.

Key Features

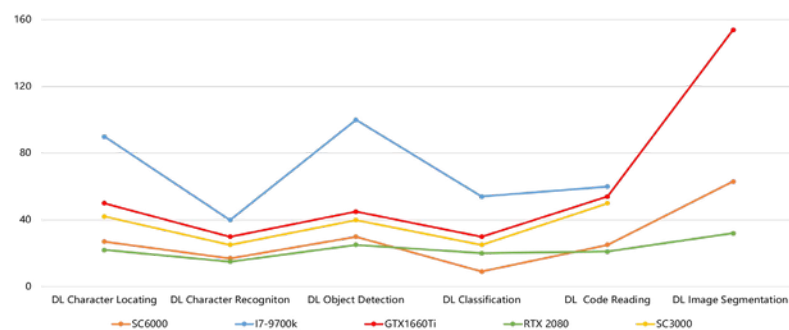
- Resolution range 0.4MP~25MP, Support long-range and large FOV detection
- Built-in large-capacity storage space, support for cyclic saving pictures
- Includes traditional vision algorithms as well as AI deep learning, covering all types of detection
- Support a variety of industrial communication protocols
- IP65 or higher protection level, adapt to the harsh industrial application environment

Performance

- Rich algorithms function, 30+ detection tools.



- Powerful computing platform to help more complex applications.



- One-button debugging parameters, automatic setting of brightness focus and white balance

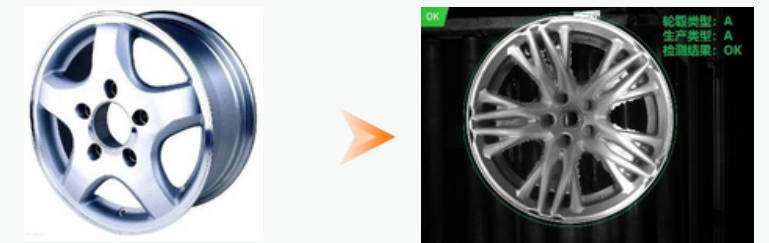


Industry Cases

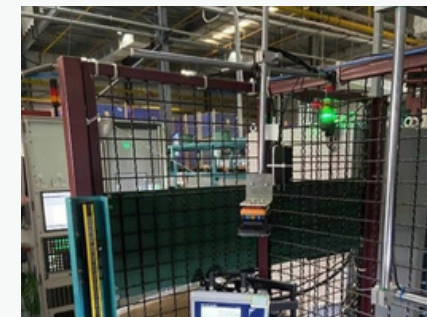
Automotive & Auto Parts Industry



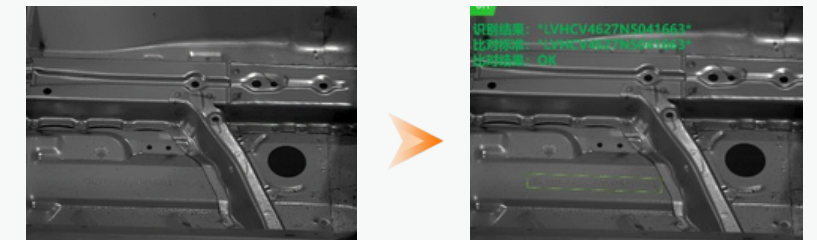
Error-proof detection of multi-model car wheels



On the complete vehicle assembly line, the SC camera can judge more than 1 hundred types of wheel categories and support instant update and modification of the set wheel type information.



Automotive base low contrast character recognition



The car base carries production information, and the different materials and brightness of different models lead to shallow etched character information, in which case the AI method is used for fast recognition reading and judgment of the detection results.

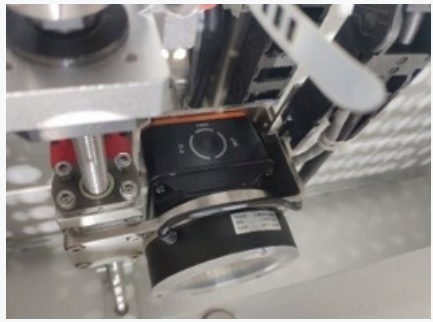
Medical Industry



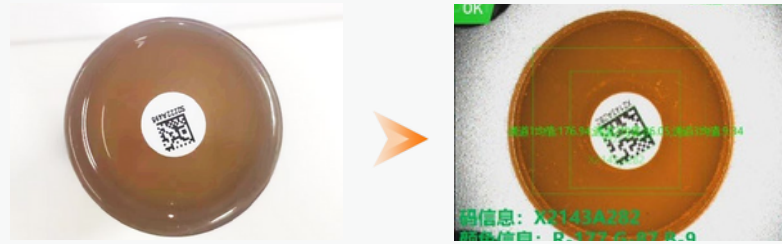
Pill box code traceability



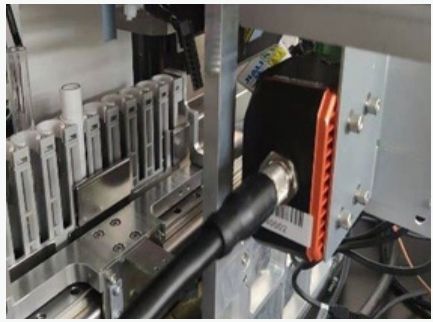
By using the AI method of OCR + code reading, up to more than 99.9% accuracy, it provides a more reliable and integrated solution for reading and identifying multiple information on the outer packaging of pharmaceutical boxes.



Medical culture test tube status tracking



Bacteria ferment in the culture medium over time, showing different color changes in the test tube. the SC camera's ultra-high color reproduction can record the state changes of the culture medium in real time.



Pharmaceutical test tube multi-class judgment



Arbitrary size, shape, label interference, blood color, etc. of the test tube does not affect the full autochemical detection of drug liquid test tube, the integrated camera can realize the sample container code identification, test tube category judgment, liquid level detection, etc.

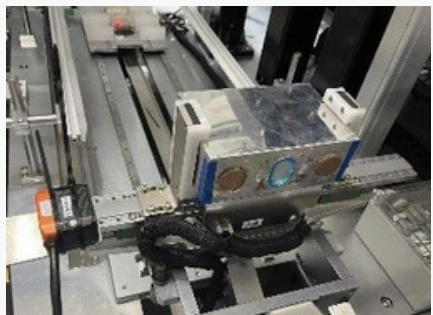
Lithium Industry



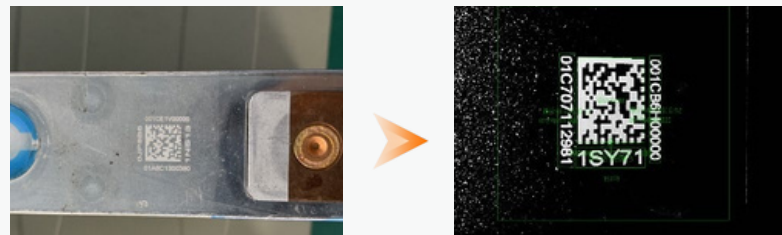
Lithium battery color detection



Compact models with efficient algorithms, 40ms can complete a test, 99.99% accuracy can ensure the accuracy of anti-error verification, integrated equipment installation, debugging, maintenance more convenient.



Inkjet interference in lithium battery information detection

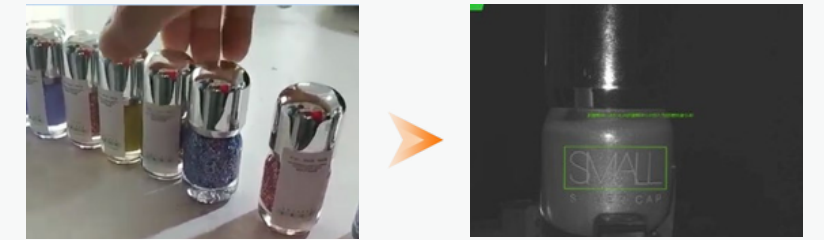


Due to inkjet and other process interference resulting in more white dot interference with characters and codes, the use of AI method of OCR + code reading, can achieve up to 99.9% accuracy rate, effectively eliminate the leakage of spray, multiple spray, spray error, missing and other abnormal products.

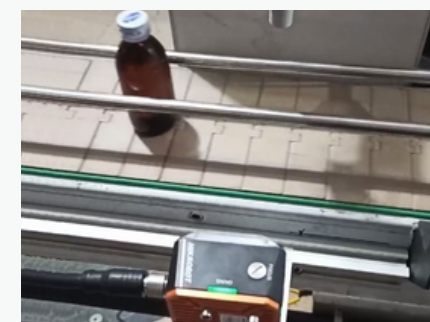
Packaging Industry



Package labeling guide ultra-high speed inspection



The labeling machine applies labels to bottles rotating at high speed, and the SC camera enables a full-flow high-speed inspection application from trigger to IO output, taking less than 40ms.



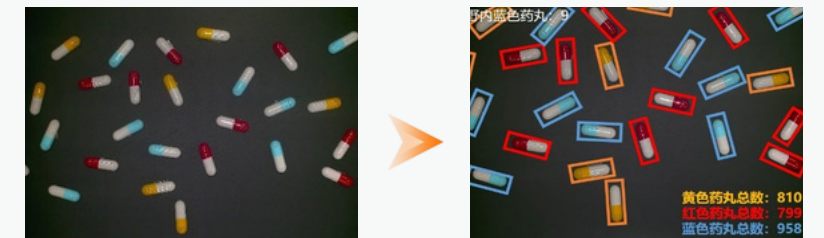
Multi-category liquid level detection



SC camera is compatible with a variety of product types and adaptive detection of a variety of liquid level heights, effectively avoiding air bubbles, impurities, etc. on the accuracy of liquid level detection.



Dynamic tracking and counting during pill packaging



Under the high-speed application scenario, it accurately captures the information such as posture and shape of the real-time movement of materials, combines with AI algorithm, real-time analysis and processing, accurately calculates the number of materials, realizes real-time counting function, without fear of stacking and other problems, and foreign objects are automatically ignored.

Robotic arm gripping scene



Robotic arm guided product gripping

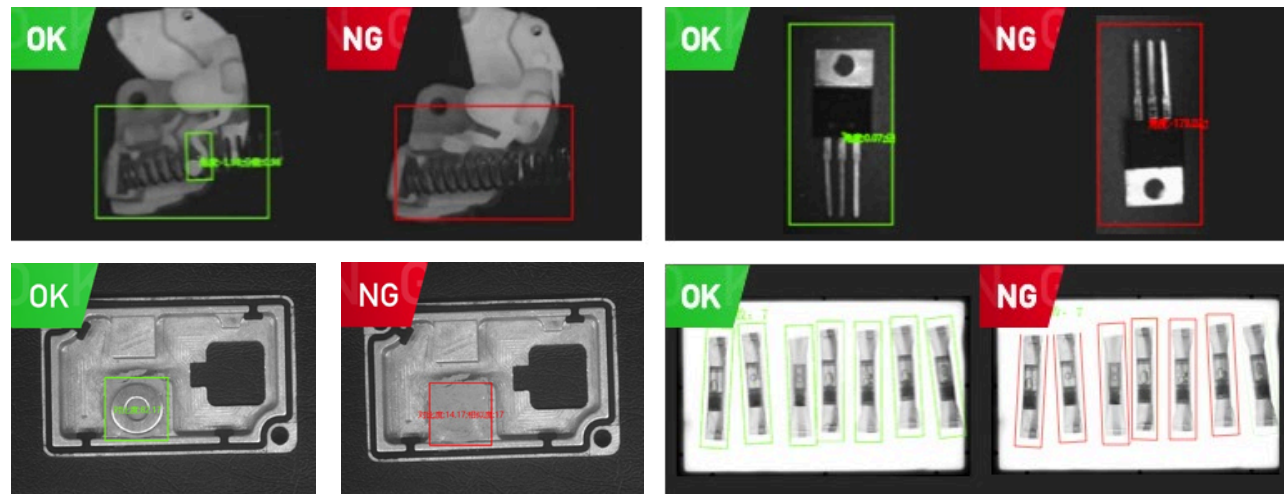


The robotic arm requires a small product size, easy installation, self-contained camera, light source, and processing algorithm, and the SC camera is compatible with a variety of product positioning gripping applications.

Smart Camera

SC2000E Series Vision Sensor

SC2000E Series Vision Sensor integrates full functions of a vision system: lighting, acquisition, processing, and communication in minimal fuselage. Bring new choices for Y/N, P/N verifications with excellent performance in error-proofing detection scenarios.



• Comprehensive Error-proofing Detection Algorithm



• Ultra-compact size



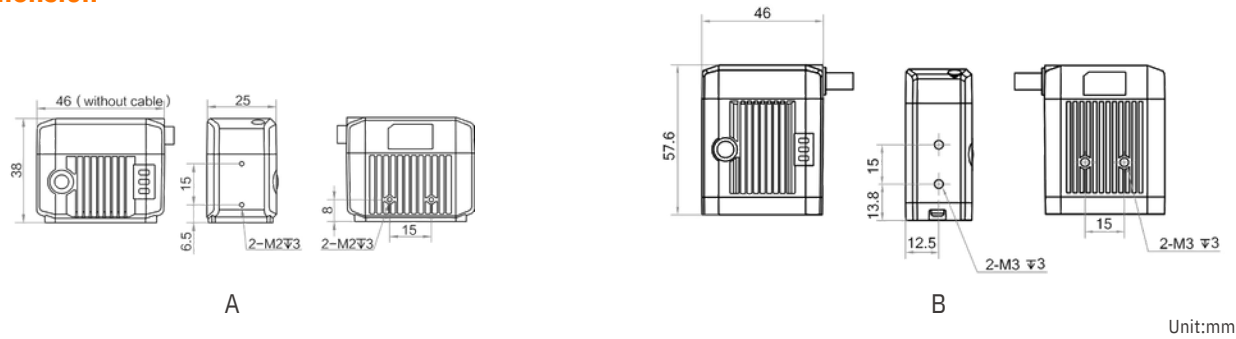
Specifications



Model	Vision tool	Pixel size	Sensor size	Resolution	Max. frame rate	Mono/color	Focal length	Label
	Defect: OL classification Whether or not: circles, lines, spots, edges, patterns Positioning: Position correction Logic: condition judgment, logic judgment, character							
MV-SC2004EM(Mini)	comparison, variable calculation Measurement: line Angle, diameter measurement, brightness mean, contrast measurement, width measurement, point line measurement, gray area, straight line Angle, pitch detection Recognition: Character recognition	6.9 μm	1/2.9"	704 × 540	60 fps	Mono	6.72 mm	A
	Defect: OL classification Whether or not: circles, lines, spots, edges, patterns Positioning: Position correction Logic: condition judgment, logic judgment, character							
MV-SC2016EM(Mini)	comparison, variable calculation Measurement: line Angle, diameter measurement, brightness mean, contrast measurement, width measurement, point line measurement, gray area, straight line Angle, pitch detection Recognition: Character recognition	3.45 μm	1/2.9"	1408 × 1024	60 fps	Mono	6.72 mm	A
	Defect: OL classification Whether or not: circles, lines, spots, edges, patterns Positioning: Position correction Logic: condition judgment, logic judgment, character comparison, variable calculation							
MV-SC2004EM	Measurement: line Angle, diameter measurement, brightness mean, contrast measurement, width measurement, point line measurement, gray area, straight line Angle, pitch detection Recognition: Character recognition	6.9 μm	1/2.9"	704 × 540	60 fps	Mono	8/12.4/14.8mm	B
	Count: spot count, edge count, pattern count Defect: OL classification Whether or not: circles, lines, spots, edges, patterns Positioning: Position correction Logic: condition judgment, logic judgment, character							
MV-SC2004EC	comparison, variable calculation Measurement: line Angle, diameter measurement, brightness mean, contrast measurement, width measurement, point and line measurement, gray area, straight line Angle, pitch detection, color area Recognition: character recognition, color comparison	6.9 μm	1/2.9"	704 × 540	60 fps	Color	8/12.4/14.8mm	B

Model	Vision tool	Pixel size	Sensor size	Resolution	Max. frame	Mono/rate color	Focal length	Label
MV-SC2016EM	Defect: OL classification Whether or not: circles, lines, spots, edges, patterns Positioning: Position correction Logic: condition judgment, logic judgment, character comparison, variable calculation Measurement: line Angle, diameter measurement, brightness mean, contrast measurement, width measurement, point line measurement, gray area, straight line Angle, pitch detection Recognition: Character recognition	3.45 μm	1/2.9"	1408 × 1024	60 fps	Mono	8/12.4/14.8m	B
MV-SC2016EC	Count: spot count, edge count, pattern count Defect: OL classification Whether or not: circles, lines, spots, edges, patterns Positioning: Position correction Logic: condition judgment, logic judgment, character comparison, variable calculation Measurement: line Angle, diameter measurement, brightness mean, contrast measurement, width measurement, point and line measurement, gray area, straight line Angle, pitch detection, color area Recognition: character recognition, color comparison	3.45 μm	1/2.9"	1408 × 1024	60 fps	Color	8/12.4/14.8m	B

Dimension



Accessories

I/O Power Cables	Standard	High Softness	Elbow
3m	MV-IDA-PE-M12A17pF-opensRJ45DB9-ST-3m	MV-IDA-PE-M12A17pF-opensRJ45DB9-HF-3m	MV-ACPE-M12A17F(back)-OPEN/RJ45-FL-3m
5m	MV-IDA-PE-M12A17pF-opensRJ45DB9-ST-5m	MV-IDA-PE-M12A17pF-opensRJ45M/DB9/opens-SP-5m	---
10m	MV-IDA-PE-M12A17pF-opensRJ45DB9-ST-10m	MV-IDA-PE-M12A17pF-open/RJ45/DB9-HF-10m	---
15m	MV-IDA-PE-M12A17pF-opensRJ45DB9-ST-15m	MV-IDA-PE-M12A17pF-opensRJ45DB9-HF-15m	---

I/O Power Cables	Standard	High Softness	Elbow
1m	MV-ACG-RJ45s-RJ45-ST-1m	---	---
3m	MV-ACG-RJ45s-RJ45-ST-3m	MV-ACG-RJ45s-RJ45-HF-3m	MV-ACG-RJ45s(up)-RJ45-ST-3m
5m	MV-ACG-RJ45s-RJ45-ST-5m	MV-ACG-RJ45s-RJ45-HF-5m	MV-ACG-RJ45s(up)-RJ45-ST-5m
7m	MV-ACG-RJ45s-RJ45-ST-7m	MV-ACG-RJ45s-RJ45-HF-7m	---
10m	MV-ACG-RJ45s-RJ45-ST-10m	MV-ACG-RJ45s-RJ45-HF-10m	---
15m	MV-ACG-RJ45s-RJ45-ST-15m	MV-ACG-RJ45s-RJ45-HF-15m	MV-ACG-RJ45s(up)-RJ45-ST-15m
30m	MV-ACG-RJ45s-RJ45-ST-30m	MV-ACG-RJ45s-RJ45-HF-30m	---



Power Supply	Two Wire Adapter	Desktop Two Wire Adapter	Switching Power Supply
Model	ADS-26FSG-1212024EPCN	KPL-060M-VI	LRS-150F-24

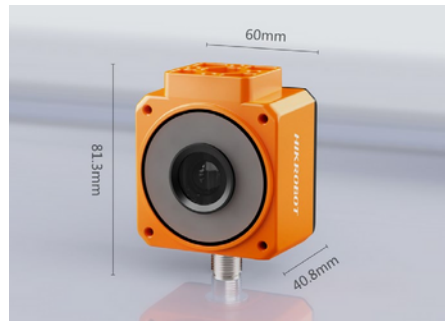
Display Equipment	Model
Expansion Box	MV-SV100
	MV-SV400
Touch Screen	MV-VT1010-008G50
	MV-VT3000-128G40



Mounting Component	Model	IO Box	Model
Standard	SC2000E Mounting Plate	Standard	MV-IDA-IO-33

SC2000A Series Navigation Sensor

SC2000A series navigation sensor is a navigation sensor developed specifically for AGV. With excellent hardware design and high-performance algorithms, the non-contact design can provide various positioning information for AGV cars stably, efficiently, and accurately. It is widely used in multiple industries such as unmanned warehousing, lithium-ion batteries, and photovoltaic systems.



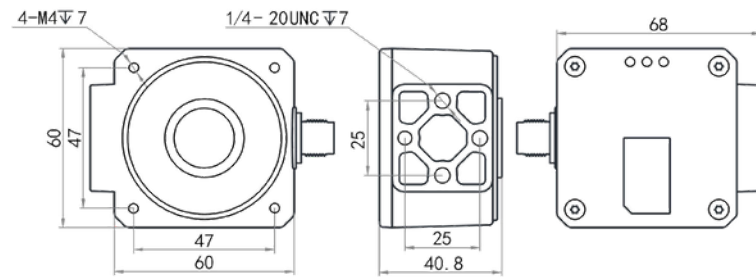
• Built in multifunctional algorithms for efficient operation

• Compact structure, perfectly embedded inside the AGV

Specifications

Model	Pixel size	Sensor size	Resolution	Max. frame rate	Max. reading speed	Max. running speed	Mono/color	Focal length
MV-SC2005AM-02WBN	4.8 μm	1/3.6"	800 × 600	100 fps	100 codes/sec	3 m/s	Mono	2.5 mm
MV-SC2005AC-02WBN	4.8 μm	1/3.6"	800 × 600	96 fps	83 codes/sec	3 m/s	Color	2.5 mm

Dimension



Unit:mm

Accessories



I/O Power Cables	Standard
1m	MV-ACC-02-2211-01m



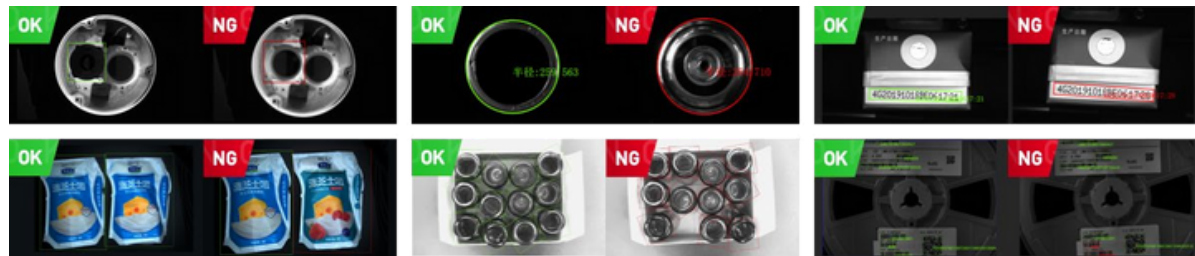
Gigabit Network Cable	Standard	High Softness	Elbow
1m	MV-ACG-RJ45s-RJ45-ST-1m	---	---
3m	MV-ACG-RJ45s-RJ45-ST-3m	MV-ACG-RJ45s-RJ45-HF-3m	MV-ACG-RJ45s(up)-RJ45-ST-3m
5m	MV-ACG-RJ45s-RJ45-ST-5m	MV-ACG-RJ45s-RJ45-HF-5m	MV-ACG-RJ45s(up)-RJ45-ST-5m
7m	MV-ACG-RJ45s-RJ45-ST-7m	MV-ACG-RJ45s-RJ45-HF-7m	---
10m	MV-ACG-RJ45s-RJ45-ST-10m	MV-ACG-RJ45s-RJ45-HF-10m	---
15m	MV-ACG-RJ45s-RJ45-ST-15m	MV-ACG-RJ45s-RJ45-HF-15m	MV-ACG-RJ45s(up)-RJ45-ST-15m
30m	MV-ACG-RJ45s-RJ45-ST-30m	MV-ACG-RJ45s-RJ45-HF-30m	---
15m	MV-ACC-01-1101-15m	MV-ACC-01-1102-15m	---
30m	MV-ACC-01-1101-30m	MV-ACC-01-1102-30m	---



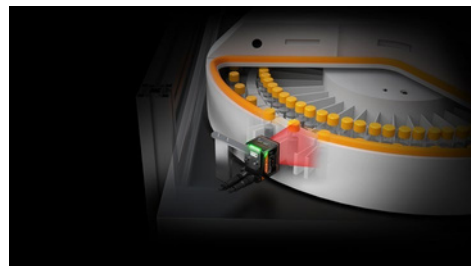
Power Supply	Two Wire Adapter	Desktop Two Wire Adapter	Switching Power Supply
Model	ADS-26FSG-12 12024EPCN	KPL-060M-VI	LRS-150F-24

SC3000 Series Vision Sensor

Integrated with imaging, processing and communication functions, the SC3000 series has a more compact size and the vision detection tools lead to better performance. Equipped with a new SCMVS for on-site deployment and lower debugging requirements, bringing a more comprehensive and cost-effective choice for visual inspection!



• Comprehensive Error-proofing Detection Algorithm



• Outgoing right angle design, supporting 180 degree rotation, flexible adaptation to narrow spaces

Specifications



Mode	Vision tool	Pixel size	Sensor size	Resolution	Frame rate	Color	Focal length	Label
MV-SC3016M	Count: Pattern count, spot count, edge count Defect detection: Exception detection Existence: Pattern existence, spot existence, edge existence, circle existence, line existence Location: Match location, match calibration, fixture Logic tool: If module, condition judge, logic judge, combination judge, string comparison, calculator Measurement: L2L angle, diameter measurement, brightness analysis, contrast measurement, width measurement, P2L measurement, greyscale size, line angle, edge width measurement Recognition: OCR, code recognition	3.45 μm	1/2.9"	1408 × 1024	60 fps	Mono	6/12.4/14.8 mm	A
MV-SC3016C	Count: Pattern count, spot count, edge count Defect detection: Exception detection Existence: Pattern existence, spot existence, edge existence, circle existence, line existence Location: Match location, match calibration, fixture Logic tool: If module, condition judge, logic judge, combination judge, string comparison, calculator Measurement: Color size, L2L angle, diameter measurement, brightness analysis, contrast measurement, width measurement, P2L measurement, greyscale size, line angle, edge width measurement Recognition: OCR, color contrast, code recognition, color recognition	3.45 μm	1/2.9"	1408 × 1024	60 fps	Color	6/12.4/14.8 mm	A

Mode	Vision tool	Pixel size	Sensor size	Resolution	Frame rate	Color	Focal length	Label
MV-SC3050M	Count: Pattern count, spot count, edge count Defect detection: Exception detection Existence: Pattern existence, spot existence, edge existence, circle existence, line existence Location: Match location, match calibration, fixture Logic tool: If module, condition judge, logic judge, combination judge, string comparison, calculator Measurement: L2L angle, diameter measurement, brightness analysis, contrast measurement, width measurement, P2L measurement, greyscale size, line angle, edge width measurement Recognition: OCR, code recognition	3.2 μm	1/1.7"	2368 × 1760	30 fps	Mono	8/12.4/16 mm	A
MV-SC3013XM	Count: Pattern count, spot count, edge count, outline count Defect detection: Exception detection Existence: Pattern existence, spot existence, edge existence, circle existence, line existence, outline existence Location: Match location, match calibration, fixture Logic tool: If module, condition judge, logic judge, combination judge, string comparison, calculator Measurement: L2L angle, diameter measurement, brightness analysis, contrast measurement, width measurement, P2L measurement, greyscale size, line angle, edge width measurement Recognition: OCR, code recognition Deep learning: object detection, classification	6.9 μm	1/1.45"	1216 × 1024	60 fps	Mono	8/12/16 mm	B
MV-SC3013XC	Count: Pattern count, spot count, edge count, outline count, color count Defect detection: Exception detection Existence: Pattern existence, spot existence, edge existence, circle existence, line existence, outline existence Location: Match location, match calibration, fixture Logic tool: If module, condition judge, logic judge, combination judge, string comparison, calculator Measurement: L2L angle, diameter measurement, brightness analysis, contrast measurement, width measurement, P2L measurement, greyscale size, line angle, edge width measurement Recognition: OCR, code recognition, color contrast, color recognition Deep learning: object detection, classification	6.9 μm	1/1.45"	1216 × 1024	60 fps	Color	8/12/16 mm	B
MV-SC3030XM	Count: Pattern count, spot count, edge count, outline count Defect detection: Exception detection Existence: Pattern existence, spot existence, edge existence, circle existence, line existence, outline existence Location: Match location, match calibration, fixture Logic tool: If module, condition judge, logic judge, combination judge, string comparison, calculator Measurement: L2L angle, diameter measurement, brightness analysis, contrast measurement, width measurement, P2L measurement, greyscale size, line angle, edge width measurement Recognition: OCR, code recognition Deep learning: object detection, classification	3.45 μm	1/1.8"	2048 × 1536	40 fps	Mono	8/12/16 mm	B

Mode	Vision tool	Pixel size	Sensor size	Resolution	Frame rate	Motor length	Label
------	-------------	------------	-------------	------------	------------	--------------	-------

Count: Pattern count, spot count, edge count, outline count, color count
 Defect detection: Exception detection
 Existence: Pattern existence, spot existence, edge existence, circle existence, line existence, outline existence
 Location: Match location, match calibration, fixture

MV-SC3030X	Logic tool: If module, condition judge, logic judge, combination judge, string comparison, calculator Measurement: L1 angle, diameter measurement, brightness analysis, contrast measurement, width measurement, P2L measurement, grayscale size, line angle, edge width measurement Recognition: OCR, code recognition, color contrast, color recognition Deep learning: object detection, classification	3.45 μm	1/1.8"	2048 × 1536	40 fps	Color	8/12/16 mm B
------------	---	---------	--------	-------------	--------	-------	--------------

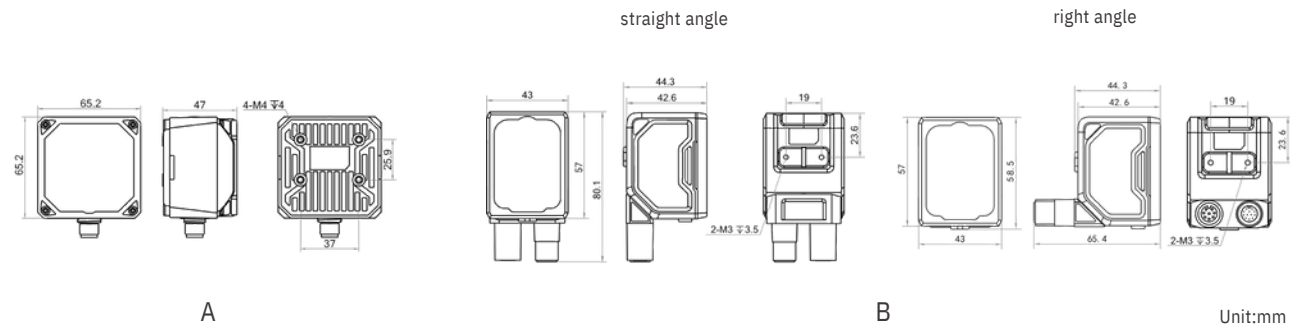
Count: Pattern count, spot count, edge count, outline count, color count
 Defect detection: Exception detection
 Existence: Pattern existence, spot existence, edge existence, circle existence, line existence, outline existence
 Location: Match location, match calibration, fixture

MV-SC3050X	Logic tool: If module, condition judge, logic judge, combination judge, string comparison, calculator Measurement: L1 angle, diameter measurement, brightness analysis, contrast measurement, width measurement, P2L measurement, grayscale size, line angle, edge width measurement Recognition: OCR, code recognition Deep learning: object detection, classification	3.45 μm	1/1.45"	2448 × 2048	30 fps	Mono	8/12/16 mm B
------------	--	---------	---------	-------------	--------	------	--------------

Count: Pattern count, spot count, edge count, outline count, color count
 Defect detection: Exception detection
 Existence: Pattern existence, spot existence, edge existence, circle existence, line existence, outline existence
 Location: Match location, match calibration, fixture

MV-SC3050X	Logic tool: If module, condition judge, logic judge, combination judge, string comparison, calculator Measurement: L1 angle, diameter measurement, brightness analysis, contrast measurement, width measurement, P2L measurement, grayscale size, line angle, edge width measurement Recognition: OCR, code recognition, color contrast, color recognition Deep learning: object detection, classification	3.45 μm	1/1.45"	2448 × 2048	30 fps	Color	8/12/16 mm B
------------	---	---------	---------	-------------	--------	-------	--------------

Dimension



Accessories

Adapt to SC3000M model



I/O Power Cables	Standard	High Softness	Elbow
3m	MV-IDA-PE-M12A17pF-opensRJ45DB9-ST-3m	MV-IDA-PE-M12A17pF-opensRJ45DB9-HF-3m	MV-ACPE-M12A17F(back)-OPEN/RJ45-FL-3m
5m	MV-IDA-PE-M12A17pF-opensRJ45DB9-ST-5m	MV-IDA-PE-M12A17pF-RJ45M/DB9/Opens-SF-5m	---
10m	MV-IDA-PE-M12A17pF-opensRJ45DB9-ST-10m	MV-IDA-PE-M12A17pF-open/RJ45/DB9-HF-10m	---
15m	MV-IDA-PE-M12A17pF-opensRJ45DB9-ST-15m	MV-IDA-PE-M12A17pF-opensRJ45DB9-HF-15m	---

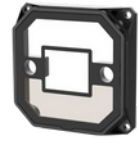


Gigabit Network Cable	Standard	High Softness	Elbow
1m	MV-ACG-RJ45s-RJ45-ST-1m	---	---
3m	MV-ACG-RJ45s-RJ45-ST-3m	MV-ACG-RJ45s-RJ45-HF-3m	MV-ACG-RJ45s(up)-RJ45-ST-3m
5m	MV-ACG-RJ45s-RJ45-ST-5m	MV-ACG-RJ45s-RJ45-HF-5m	MV-ACG-RJ45s(up)-RJ45-ST-5m
7m	MV-ACG-RJ45s-RJ45-ST-7m	MV-ACG-RJ45s-RJ45-HF-7m	---
10m	MV-ACG-RJ45s-RJ45-ST-10m	MV-ACG-RJ45s-RJ45-HF-10m	---
15m	MV-ACG-RJ45s-RJ45-ST-15m	MV-ACG-RJ45s-RJ45-HF-15m	MV-ACG-RJ45s(up)-RJ45-ST-15m
30m	MV-ACG-RJ45s-RJ45-ST-30m	MV-ACG-RJ45s-RJ45-HF-30m	---

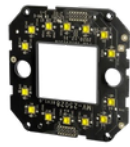


Power Supply	Two Wire Adapter	Desktop Two Wire Adapter	Switching Power Supply
Model	ADS-26FSG-12 12024EPCN	KPL-060M-VI	LRS-150F-24

Lens	SC3013	SC3050
6mm	BTY0640-MP	---
8mm	---	BHYB0856-12S
12mm	BTS1240-MP	BHP1256-12S
15mm	BTS1540-01S	---
16mm	---	BHP1656-12S
25mm	---	BHP2556-12S



Lens Cap	Model
Transparent	MV-SC3000-C-NN
Semi-polarization	MV-SC3000-C-HP
Polarization	MV-SC3000-C-FP
Magnifier	MV-IDA-C-Y-62-62-M1
	MV-IDA-C-Y-62-62-M2



Light source	Model
White	MV-SC3000-L-WB
Blue	MV-SC3000-L-BB
Red	MV-SC3000-L-RB
Near-infrared	MV-SC3000-L-IB



IO Box	Model
Standard	MV-IDA-IO-33



Display Equipment	Model
Expansion Box	MV-SV100
	MV-SV400
Touch Screen	MV-VT1010-008G50
	MV-VT3000-128G40



Mounting Component	Model
Standard	V020-Mounting Component

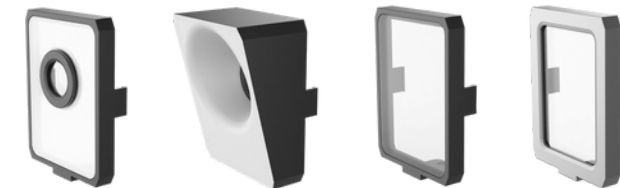
Adapt to SC3000X model



I/O Power Cables	Standard	High Softness	Elbow
3m	MV-IDA-P-M12A12pF-open-ST-3m	MV-IDA-P-M12A12pF-open-HF-3m	---
5m	MV-IDA-P-M12A12pF-open-ST-5m	MV-IDA-P-M12A12pF-open-HF-5m	MV-ACP-M12A12pF (up)-open-ST-5m
7m	MV-IDA-P-M12A12pF-open-ST-7m	---	---
10m	MV-IDA-P-M12A12pF-open-ST-10m	MV-IDA-P-M12A12pF-open-HF-10m	---
15m	MV-IDA-P-M12A12pF-open-ST-15m	---	---
20m	---	MV-IDA-P-M12A12pF-open-HF-20m	---
30m	MV-IDA-P-M12A12pF-open-ST-30m	---	---



Gigabit Network Cable	Standard	High Softness	Elbow
3m	MV-IDA-E-M12A8pF-RJ45-ST-3m	MV-IDA-E-M12A8pF-RJ45-HF-3m	---
5m	MV-IDA-E-M12A8pF-RJ45-ST-5m	MV-IDA-E-M12A8pF-RJ45-HF-5m	MV-ACE-M12A8Pm (UP)-RJ45-C5e-5m
7m	MV-IDA-E-M12A8pF-RJ45-ST-7m	---	---
10m	MV-IDA-E-M12A8pF-RJ45-ST-10m	MV-IDA-E-M12A8pF-RJ45-HF-10m	---
15m	MV-IDA-E-M12A8pF-RJ45-ST-15m	---	---
20m	---	MV-IDA-E-M12A8pF-RJ45-HF-20m	---
30m	MV-IDA-E-M12A8pF-RJ45-ST-30m	---	---



Lens Cap	Model
SC3000X	Magnifier
	Uniform light cover
	YAG guard
	ESD guard

SC6000 Series Smart Camera

SC6000 series smart cameras are developed based on high-performance embedded processors, with powerful hardware performance and fully functional VM Algorithm Development Platform. They can meet machine vision applications such as visual positioning, size measurement, defect detection, and information recognition. The highly integrated product form brings more choices for intelligent manufacturing.



• Built in over 140 visual tools, various deep learning algorithms



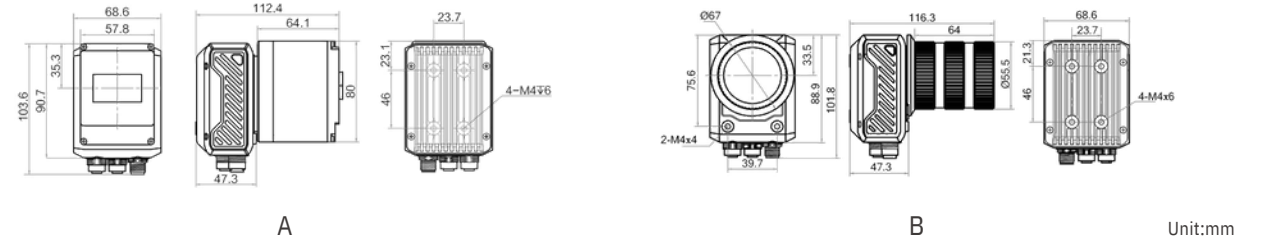
• Rich interfaces, breaking through limitations

Specifications

Model	Function module	Pixel size	Sensor size	Resolution	Max. frame rate	Mono/color	Focal length	Label
MV-SC6016M	VM Platform (Including deep learning modules)	3.45 μm	1/2.9"	1408 × 1024	60 fps	Mono	6/12/16 mm	A
MV-SC6016C	VM Platform (Including deep learning modules)	3.45 μm	1/2.9"	1408 × 1024	60 fps	Color	6/12/16 mm	A
MV-SC6050M	VM Platform (Including deep learning modules)	3.2 μm	1/1.7"	2592 × 2048	40 fps	Mono	8/12/16 mm	A
MV-SC6050C	VM Platform (Including deep learning modules)	3.2 μm	1/1.7"	2592 × 2048	30 fps	Color	8/12/16 mm	A
MV-SC6016M-00C-NNN	VM Platform (Including deep learning modules)	3.45 μm	1/1.45"	2048 × 2048	30 fps	Mono	8/12/16 mm	A
MV-SC6016C-00C-NNN	VM Platform (Including deep learning modules)	3.45 μm	1/1.45"	2048 × 2048	30 fps	Color	8/12/16 mm	A
MV-SC6050M-00C-NNN	VM Platform (Including deep learning modules)	3.2 μm	1/1.45"	2048 × 2048	30 fps	Mono	8/12/16 mm	A
MV-SC6050C-00C-NNN	VM Platform (Including deep learning modules)	3.2 μm	1/1.45"	2048 × 2048	30 fps	Color	8/12/16 mm	A
MV-SC6250M-00C-NNN	VM Platform (Including deep learning modules)	3.2 μm	1/1.45"	2048 × 2048	30 fps	Mono	8/12/16 mm	A
MV-SC6250C-00C-NNN	VM Platform (Including deep learning modules)	3.2 μm	1/1.45"	2048 × 2048	30 fps	Color	8/12/16 mm	A



Dimension



Accessories

I/O Power Cables	Standard	
	3m	MV-SC-M12A17pF-open/SMRF-ST-3m

Gigabit Network Cable	Standard	High Softness	Elbow
3m	MV-IDA-E-M12A8pF-RJ45-ST-3m	MV-IDA-E-M12A8pF-RJ45-HF-3m	---
5m	MV-IDA-E-M12A8pF-RJ45-ST-	MV-IDA-E-M12A8pF-RJ45-HF-5m	MV-ACE-M12A8Pm(UP)-RJ45-C5e-5m
7m	5m MV-IDA-E-M12A8pF-RJ45-	---	---
10m	MV-IDA-E-M12A8pF-RJ45-ST-10m	MV-IDA-E-M12A8pF-RJ45-HF-10m	---
15m	MV-IDA-E-M12A8pF-RJ45-ST-15m	---	---
20m	---	MV-IDA-E-M12A8pF-RJ45-HF-20m	---
30m	MV-IDA-E-M12A8pF-RJ45-ST-30m	---	---

Show extension lines	Standard	Power Supply	Desktop Two Wire Adapter	Switch power supply
1m	MV-SC-M12A17pM-U2/DB15-ST-1m	Model	KPL-060M-VI	LRS-150F-24

Lens	SC6000 C-mount (install Lens Cap)	SC6000 C-mount (not install Lens Cap)	Mounting Component	Model
Model	MAX: Φ48 mm × 62 mm with Lens	All	Standard	V024-Mounting Component